



JWST MIRI IMAGER

Doc. : MICE Management Plan
Ref. : MIRI-CE-00033-CEA
Iss. : 0.2
Date : 24/04/2015

Page : 1/9

MICE The French JWST/MIRI Centre of Expertise Management Plan 2015 - 2019

Reference : MIRI-CE-00033-CEA

Issue : 0.2

Date : 24/04/2015

<i>Prepared by:</i>	Patrice Bouchet	<i>Date:</i>	29/11/09
<i>Approved by:</i>	Pierre-Olivier Lagage MIRI co-PI	<i>Date:</i>	
<i>Authorised by:</i>	Pierre-Olivier Lagage MIRI co-PI	<i>Date:</i>	



JWST MIRI IMAGER

Doc. : MICE Management Plan
Ref. : MIRI-CE-00033-CEA
Iss. : 0.2
Date : 24/04/2015

Page : 2/9

Document Changes Record

Issue	Date	Chapter/page	Change
0.1	16/10/2009		
0.2	24/04/2015	Whole Document	Updated

DRAFT



JWST MIRI IMAGER

Doc. : MICE Management Plan
Ref. : MIRI-CE-00033-CEA
Iss. : 0.2
Date : 24/04/2015

Page : 3/9

Table of Contents

REFERENCE :	1
ISSUE :	1
DATE :	1
1. INTRODUCTION	4
1.1 Scope.....	4
1.2 Acronyms	4
1.3 Documents	5
2. MANAGEMENT PLAN	6
2.1 MICE Organization Flow Chart	6
3. STAFFING	7
3.1 Permanent members:	7
3.2 Non-permanent members:	7
3.3 Others:	8
4. THE "BRIDGING PHASE"	9



JWST MIRI IMAGER

Doc. : MICE Management Plan
Ref. : MIRI-CE-00033-CEA
Iss. : 0.2
Date : 24/04/2015

Page : 4/9

1. Introduction

1.1 Scope

The document MIRI-CE-00011-CEA presents the scientific requirements that must rule the MICE, and the document MIRI-CE-00022-CEA defines how the objectives set will be pursued by this center. Both documents describe the various support tasks that must be fulfilled out by MICE if the community (in particular the French one) is to obtain maximum scientific benefit from the investment in MIRI. The present document is an updated version of MIRI-CE-0003-CEA. It describes the management plan for the French MICE for the period 2015 – 2019. It gives also an estimate of the staffing which are/will be involved and their needs.

1.2 Acronyms

Here below the acronyms used in the document

AIM: Astrophysique et Interactions Multi-échelles
CNES: Centre National d'Études Spatiales
CV : Cryo-Vacuum Tests at GSFC
CWG: Coronagraphs Working Group at STScI
DHAS: Data Handling and Analysis Software
DSN : Deep Space Network
EC: European Community
EU: European Union
ESA: European Space Agency
FM: Flight Model
GSFC: NASA Goddard Space Flight Center
GTO: Guarantee Time Observations
IAP: Institut d'Astrophysique de Paris
IAS: Institut d'Astrophysique Spatiale
IPWG : Imager Pipe Line Working Group
IR: Infrared
JWST: James Web Space Telescope
KP : Key programme
LAM: Laboratoire d'Astrophysique de Marseille
LESIA: Laboratoire d'Études Spatiales et d'Instrumentation Associée
MICE: MIRI Centre of Expertise
PI: Principal Investigator
PTCT: Performance Tests & Calibration Team
RAL: Rutherford Appleton Laboratory
RTV: Real Time Viewer
STScI: Space Telescope Science Institute



JWST MIRI IMAGER

Doc. : MICE Management Plan
Ref. : MIRI-CE-00033-CEA
Iss. : 0.2
Date : 24/04/2015

Page : 5/9

1.3 Documents

1.3.1 Applicable

MIRI-PL-00024-ATC
MIRI-CE-00011-CEA
MIRI-CE-00022-CEA

1.3.2 Reference

MIRI-PL-00009-ATC

DRAFT



JWST MIRI IMAGER

Doc. : MICE Management Plan
 Ref. : MIRI-CE-00033-CEA
 Iss. : 0.2
 Date : 24/04/2015

2. Management Plan

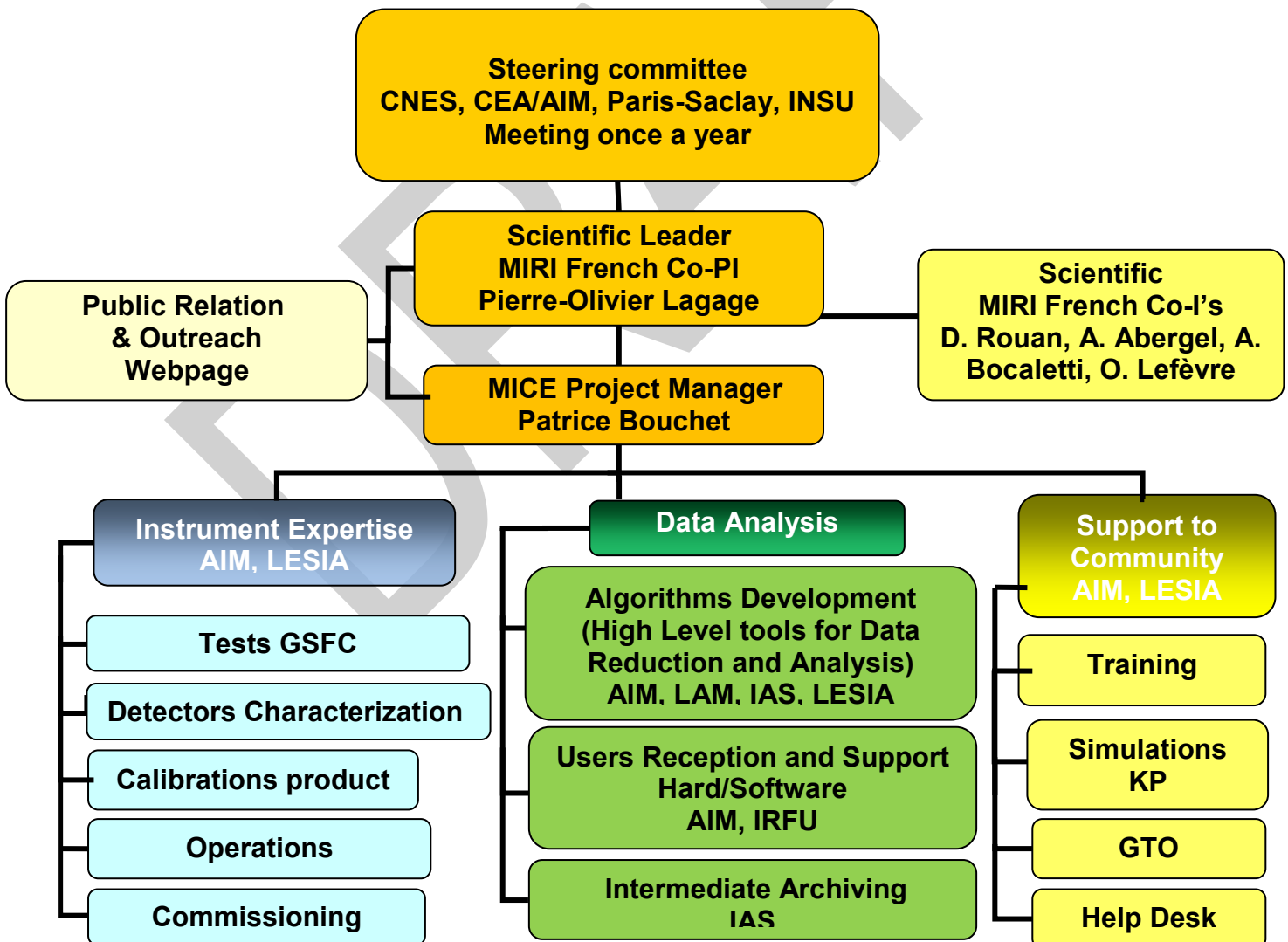
MICE reports directly to the national Co-PI (ie. Pierre-Olivier Lagage) and is affiliated to its home institution, namely the *Service d'Astrophysique* at CEA-Saclay. Internal Reports of activity will be issued at a regular 3 months basis, with copy to the MIRI CNES manager.

As stated in MIRI-CE-000022-CEA, 4 periods must be considered. Each period will be considered as a separate work-package, the completion of which will be sanctioned by a general review and accounting report.

4Q2015 – 2Q2016	Cryo-Vacuum (CV3) Tests at GSFC
3Q2016 – 2Q2018	Pre-Launch Science & Engineering Support
3Q2018 – 1Q2019	Commissioning, calibration, science
2Q2019 – 4Q2019	Routine Operations

2.1 MICE Organization Flow Chart

MICE will be organized as shown in the diagram below:





JWST MIRI IMAGER

Doc. : MICE Management Plan
Ref. : MIRI-CE-00033-CEA
Iss. : 0.2
Date : 24/04/2015

Page : 8/9

3.3 Others:

Besides the above listed staff, a dozen of AIM/SAP permanent scientists which do not belong to the EC are much interested in working on MIRI for imager simulations (galaxies with a multi-wavelength approach) and production of catalogs and physical parameters.

Nombreux scientifiques intéressés à AIM en dehors des membres du consortium	Equipe Cosmologie et Evolution des galaxies (David Elbaz, Emeric LeFloch, E. Daddi, S. Juneau...)	Simulation images MIRI dans le cadre de prédiction multi-longeurs d'onde, suite programme Européen ASTRODEEP pour les champs Candel. Participation à la mise à disposition de la communauté d'information sur les propriétés physiques des galaxies
	Groupe Milieu Interstellaire et Formation des Etoiles (Philippe André, S. Menchikov, A. Maury, S. Madden, ...)	

DRAFT



JWST MIRI IMAGER

Doc. : MICE Management Plan
Ref. : MIRI-CE-00033-CEA
Iss. : 0.2
Date : 24/04/2015

Page : 9/9

4. The “Bridging Phase”

During 2015 – 2017 the EC activities will be run under the so-called “Bridging Phase”.

A0	WorkPackage	3 fte/an durant 3 ans
A0	National and consortium Project management	0.5 fte
A1	General Support to GSFC	0.2 fte
A2	General Support to STScl	0.5 fte
A3	Third ISIM Cryo Test	0.8 fte
A4	Key Documentation updates and discussions	0.5 fte
A5	FPS Calibration and Characterisation Test Support	3 fte
A7	Increase in Calibration work due to sensitivity issue	1 fte
A9	Extensive/mature calibration pipeline development for the launch	3 fte

As far as France is concerned, it is clear that most of these activities fall under MICE’s mission.

DRAFT